



COMPETITION ENTERPRISE 2023



50th Anniversary 1974 - 2023 North Hill

ENTRANT INFORMATION

GENERAL INFORMATION

Dates: Saturday 1st July to Saturday 8th July 2023, inclusive.

As usual, the Sunday following, 9 July, will be a "Fly Home" day

Venue:

Devon and Somerset Gliding Club Ltd.

North Hill Airfield

Sheldon, Honiton

Devon

EX14 4QW

Website: www.dsgc.co.uk

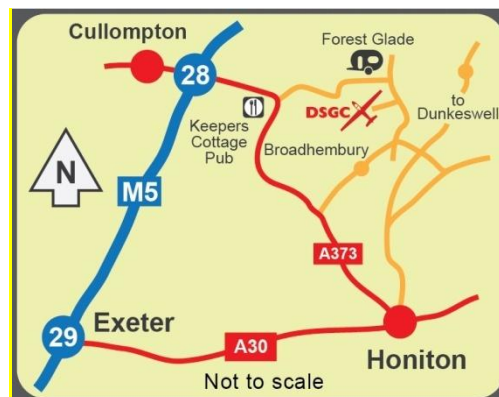
email: secretary@dsgc.co.uk

Clubhouse / Control Telephone: 01404 841386

(Control phone backup 07964 693311)

Launch Point Telephone: 07743 200902

Getting to the Site: Use EX14 4QW or what3words ///farmer.overlooks.apron



- **From M5 Exit 28:** Take the A373 towards Honiton, Just after Keepers Cottage, turn left onto Broad Road . Continue up the hill past Forest Glade then turn right at the T-junction along Golden Lane to the Club entrance on the right you will see a blue DSGC glider sign at entrance to airfield. Turn left up private wooded drive which has a green iron framed gate at the entrance. Note: Part of Broad Road around the hairpin has recently been resurfaced, but the rest of this route remains full of hazardous potholes. This narrow road (single track in places) has a steep hairpin bend and often has farm and tourist traffic.
- Alternative route: After Colliton, turn left for Broadhembury. Travel through the village and continue towards Dunkeswell. Turn left onto Golden Lane, signposted Sheldon and after approximately 1 mile look left for house entrance called "Golden Cleeve" and immediately after, on the left you will see a blue DSGC glider sign at entrance to airfield. Turn left up private wooded drive which has a green iron framed gate at the entrance.
- **From M5 Exit 25:** There is a route from the Taunton exit that goes via Taunton racecourse, Corfe and past Smeatharpe which a satnav may find. (details too long to list here).
- **From A30/A303 Honiton bypass:** Take slip road signposted Dunkeswell, Take Langford Road towards Dunkeswell. (There are also brown signs to Wolford Chapel) After approximately 2.8

miles, take the left fork onto Limers Lane towards Dunkeswell. After approximately 1 mile (having passed the entrance to Wolford Chapel) at the next crossroads Wolford Cross, turn left onto Long Lane. After approximately 1 mile, turn right onto Golden Lane, signposted Sheldon and after approximately 1 mile look left for house entrance called "Golden Cleeve" and immediately after, on the left you will see a blue DSGC glider sign at entrance to airfield. Turn left up private wooded drive which has a green iron framed gate at the entrance.

Site Mobile Coverage and Internet:

- **Mobile:** With North Hill being a rural location, mobile service is generally good on all networks, but can be patchy in some places around the site.
- **Internet:** The Clubhouse, Control and Briefing Hangar area has good WiFi from StarLink. More limited coverage to the caravan/camping area. Please avoid heavy use of streaming to ensure all get a reasonable service.

Site Facilities

- **Payments:** DSGC can accept card payments or bank transfers. All competitors will be set up with a flying account, launches and other charges will be charged to the account for settling prior to leaving.
- **Toilets:** Permanent toilets are available in the clubhouse. Portable toilets will be available outside the briefing hangar, in the camping / caravan paddock, near the east end launch point and at west end of the airfield.
- **Caravan waste:** There is a toilet waste facility available near the shower entrance, only Eco-chemicals are allowed to avoid damage to the bio-system.
- **Showers:** Three common permanent showers are available just outside the clubhouse.
- **Water:** North Hill water is from an underground spring, and subsequently filtered and purified by UV light. It is annually tested by the district council for human consumption. Exterior taps on north side of clubhouse are available for personal use or filling water carriers. There are also taps by the glider hangar and fuel bowser.
- **Battery Charging:** Facilities for battery charging are available in the Briefing hangar.
- **FLARM:** North Hill has a FLARM receiver, and coverage throughout Devon and Somerset is very good. Displays can be seen on the clubhouse television. All gliders flying from North Hill are required to have Flarm, we ask competitors to register with OGN and not to block their ID.
- **Site Catering:** Open each day
 - Breakfast 07:00 -10:00
 - Lunch 12:00 -14:00
 - Snacks 10:00-12:00, 14:00 – 18:00
 - Tea/Coffee available any time
- **Bar:** A card payment bar will be open each evening in the clubhouse, drinks can also be charged to flying accounts. Beers, wine soft drinks will be available.
- **Camping and Caravanning:** Caravans, Motor Homes and Tents parking area is available in the Paddock, with overflow at the end of the static caravans. Charged at £25 per week. Electricity hook-ups will be available in the Paddock, at an additional charge of £25 for the week.
- **Local Accommodation and Eateries:**

- Approximately 1 ½ miles from the DSGC is Forest Glade Holiday Park. They have static caravan rentals and offer a 10% discount if you tell them you are part of Competition Enterprise.
- Please also see the DSGC website (About Us/Where to Stay and Eat) for a larger listing of nearby B&Bs, self-catering cottages, hotels, pubs and restaurants.
- **Shops:** There are small shops in the nearby villages of Dunkeswell and Broadhembury and at Forest Glade. Supermarkets (Aldi, Lidl, Tesco) are available in Honiton or Cullompton, both approximately 7 miles from North Hill.
- **Oxygen:** Not expected to be needed, but bottle recharging may be locally available at JR Services, Kentisbeare EX15 2BR ; Telephone: 01884 266400.
- **Fuel:**
 - DSGC has 100LL avgas available
 - Jet A-1 is available at Dunkeswell Aerodrome
 - Local filling stations are in Honiton and Cullompton
- **Charts:** Ed 49 Southern England & Wales , the Club does not hold large stocks of the chart, but they are available from nearby Dunkeswell Aerodrome.
- **Cash Points:** A cash point is available in Dunkeswell village shop, Mon - Sat 07:00-21:00 Sun 08:00-20:00. Other cash machine points and Banks are available in Cullompton and Honiton.
- **Arrival:** On arrival at the North Hill site, please check in at Control which will be signposted. As soon as possible, move your trailer and /or caravan to the designated parking areas. Control will be open for booking on Friday 30th June from 09:00-18:00. The Club will be open as normal on Wednesday 28th and Thursday 29th June for site checks for pilots who may wish to familiarize themselves with the immediate area.

Social Activities:

- Arrival Supper: Dinner will be available until 9pm on Friday 30 June. Helpful to know numbers in advance, please email northhillcafe@hotmail.co.uk
- Tuesday evening - Pizza Supper
- Wednesday evening Dinner will be available in North Hill cafe from 18:00, numbers in advance please
- Final Party and Competition Enterprise 2023 Prize Giving will be held in the Clubhouse area and marquee on Saturday evening, 8 July, and will include a ticketed paella supper (veggie option available) and free bar. The event will be combined with a DSGC member event.

Further details will be available from Control and announced at Briefing.

Fees:

- Entry:
 - Adults: £200 per glider
 - DSGC members: £150 per glider
 - Juniors (Under 25 on 1st January 2023): £100 per glider
- Launches
 - 2000 foot aerotow - £45.00
 - Winch launch - £11.00
 - Self-Launchers - £10.00 per launch

- All Competition Enterprise 2023 flights will be by aerotow / self-launching (or winching after the aerotow grid).
- Caravans, Motorhomes, Tents Parking £25, Electricity connection £25

Airfield layout and guidance

General

- The airfield will be set up for either west or east launching - defined daily by the Competition Director (CD) and notified on What'sApp CE23 Broadcast
- Time of first and last launch will be announced at Briefing, and may be modified by What'sApp CE23 Broadcast.
- Aerotow will be the prime method of competition launching, but winch launching for competition flights (if required) will be opened after completion of the aerotow grid.
- Winch launching in a strong crosswind North or South) is at the discretion of the Competition Director (CD) and the Club Safety Officer/ CFI)

Grid positions

- Aerotow grid will be to the south of the centerline behind the AG marker.
- Aerotow grid will have two lines -the northern line will be for heavy gliders
- Winch grid will be a single line behind the Aerotow Light gliders grid.
- Self-Launching gliders must request permission from Duty Launch Controller (DLC) to taxi on to the airfield, if not parked on the aerotow grid.

Operations

- The Competition Aerotow grid will launch first, (as announced, daily by CD), once all aerotows are complete, the Competition winch grid will move forward to the LC.
- The Competition Winch grid (if required) will start launching as soon as the last sailplane on the aerotow grid (when competition launching started) has taken off.
- Late Grid arrivals / Relights will take place as directed by DLC after both grids have been launched.
- Any Glider not ready when the Launch supplier gets to them will be moved out of the launch grid to the start of the relight relaunch queue.
- All aircraft retrievals / positioning around the perimeter of the field (please keep close to the perimeter as far as possible). The preferred side will always be upwind side.
- All aircraft landing during the Aerotow / Winch Grid Launch **MUST** clear to the upwind edge of the safety landing area and await radio clearance to move, by DLC.
- In the event of a need to change ends after Competition Grids are formed, please play nicely and stick to original grid order.

Non- Competition Flying

- Winch launches will be available at the discretion of the CD after the Competition Grid launch.
- Gliders will be winch launched from LC.
- Aerotows / Self launch may be possible, contact DLC or LC prior to positioning
- All club or other aircraft flying will be advised 30 minutes before competition launching time to either stay airborne or land in the designated safety landing area and then promptly clear to the airfield edge to await clearance to backtrack / retrieve to the launching end of the site.

Overnight Glider Parking

- In the designated areas only (see Site Map)
- Picketing on the Grid is not permitted

Noise Abatement procedures

Please be aware of our neighbours if using engines, and avoid use at low level within the immediate vicinity (2nml) of the airfield.

Car Parking

- All cars should be removed from the Grid areas 5 minutes before Grid launching begins.
- Unattended Cars should be parked in the designated car park areas only (see Site Map).

Control

What'sApp CE23 Broadcast will be used to inform Competitors and Crew of important messages like time of briefing, rebriefs, Grid position etc.

Scoring

Initial self-scoring sheets can be sent by email enterprisetraces@gmail.com or CE23 What's App, Flight traces should also be sent by email or CE23 What'sApp as soon as possible after landing. If necessary Flight traces may be submitted on USB stick to Control. Special Rewards may be awarded for competitors / crews delivering Flight Traces in a timely manner, to enable the preliminary results to be published quickly.

Local Airspace Rules

Details of local airspace rules are available on DSGC website including agreements for operation within Dunkeswell ATZ and Drop Zone, Exeter, Yeovilton and Cardiff airspace.

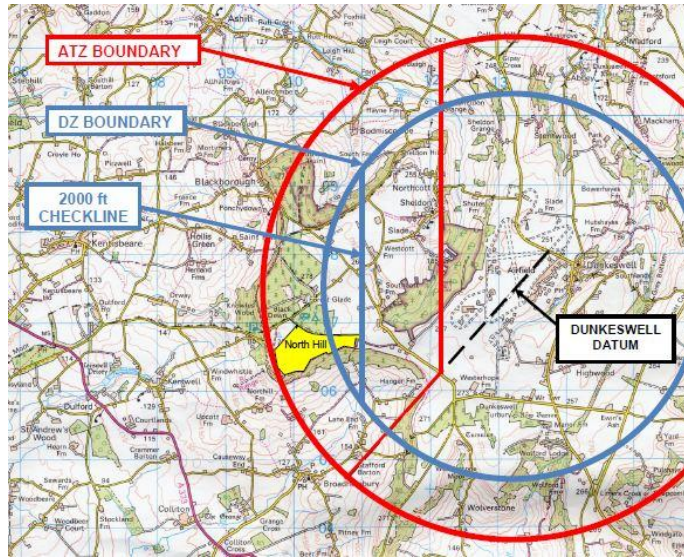
Please read:

<http://www.dsgc.co.uk/docs-and-policies/local-airspace-rules>,

http://www.dsgc.co.uk/pdf/documents/dsgc_guidance_to_visitors.pdf

There is ongoing discussion with Exeter regarding a proposal for a change of local airspace to Class D. It is critical that all pilots conduct themselves to avoid Airprox events. There will be an update to this at Competition Briefing.

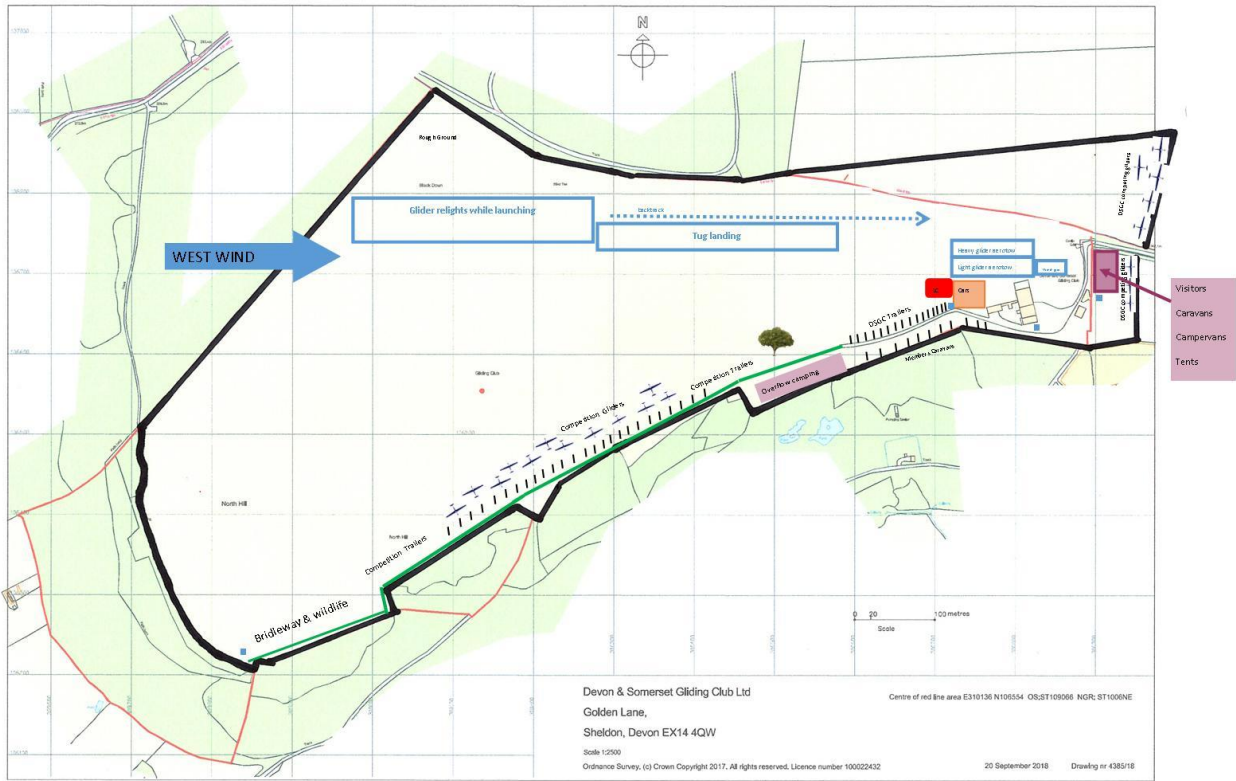
The map below outlines the local agreement with Dunkeswell's ATZ and Dunkeswell Parachuting Drop Zone.



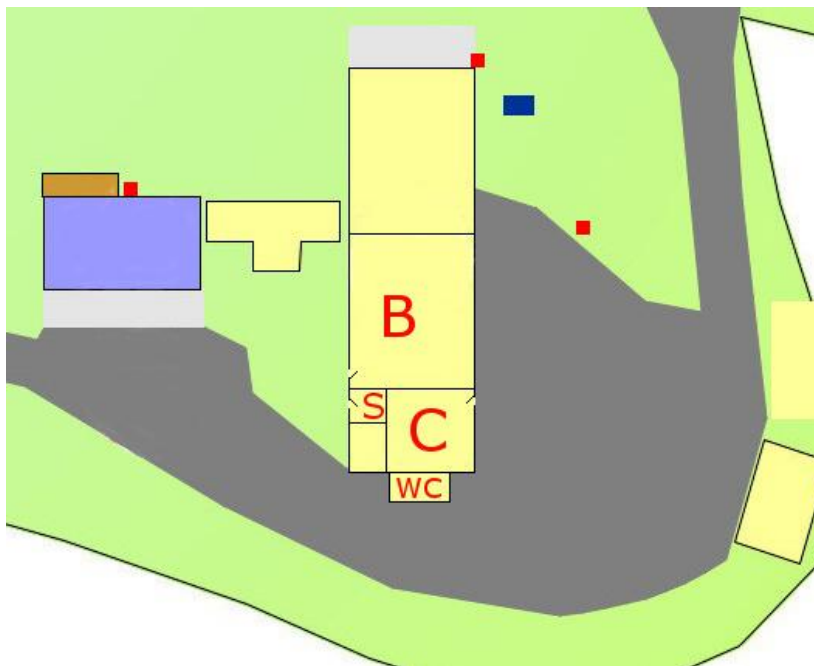
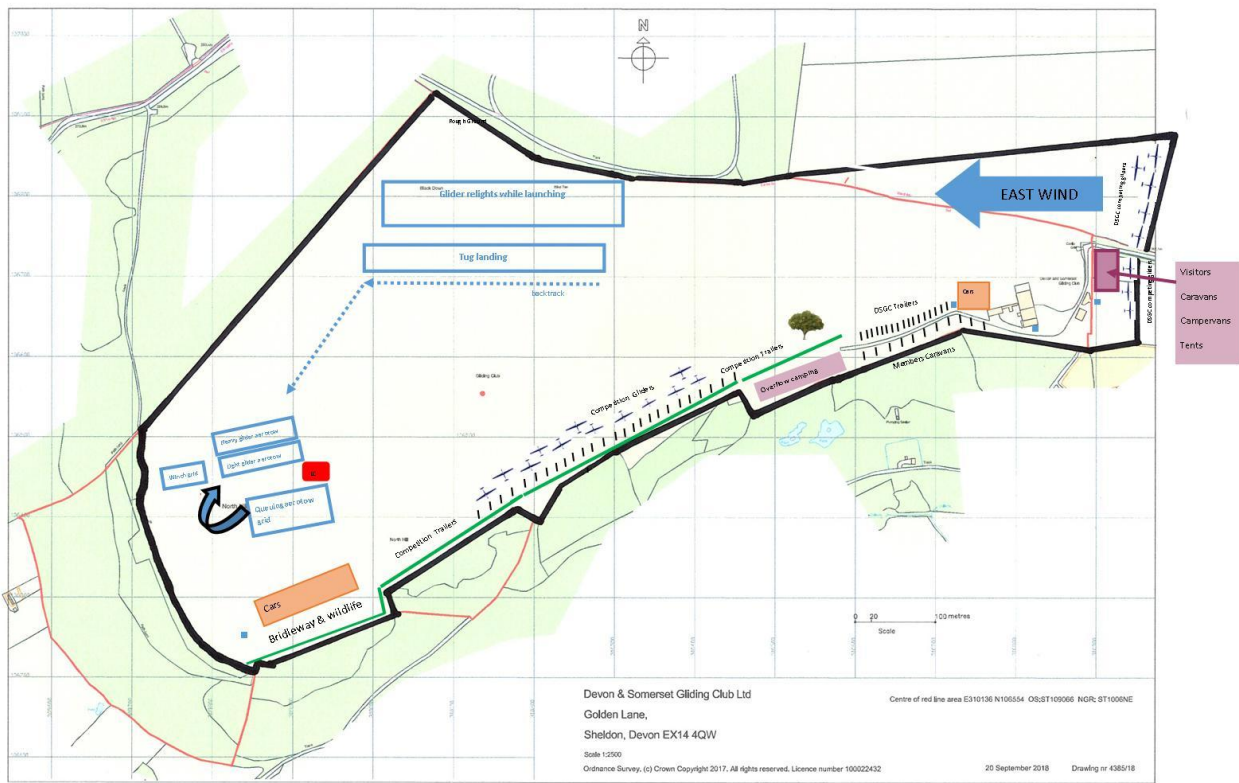
LOCAL RADIO FREQUENCIES

| | |
|---------|---|
| 129.905 | North Hill Gliding <u>and</u> Dunkeswell Parachute DZ |
| 123.480 | Dunkeswell Radio |
| 128.980 | Exeter Radar |
| 119.330 | Exeter ATIS |
| 123.010 | Eaglescott Radio |
| 127.350 | Yeovilton Radar |
| 130.805 | Yeovil (Westlands) Radar |
| 130.105 | Gliding |

Airfield Layout West Wind



Airfield Layout East Wind



- B** Briefing Room
- C** Competition Enterprise Control
- S** Showers
- WC** Extra toilets (others in Clubhouse)
- Drinking Water taps